

# Meltingpot

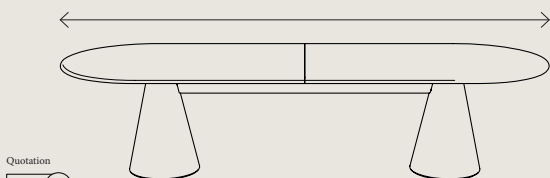
Made to order

KOOIJ

The Meltingpot table offers a third life to recycled plastic prototypes and colour tests from the Kooij studio. Our in-house colourist composes a table from precious, fleeting resources. As such, each piece is a one-off interaction between intuition, material and chance. We invite you to discover the stages of this process, created with you in mind.

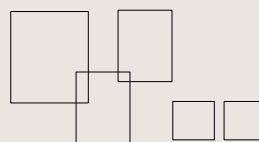
## YOU DECIDE THE SIZE

You may select between 9p, 10p, 12p, 14p or 16p. For exact size and weight specifications, we gladly refer you to the datasheets. Once your choice has been made, we will prepare a tailored quotation for you, including shipping if desired. To begin the making of your table, we kindly ask for a 30% prepayment upon approval of the quotation.



## YOU PROVIDE A MOODBOARD

To refine your table even further, we invite you to share a moodboard or a selection of references that capture the atmosphere you envision. This may include colours, textures, or images of interiors you are drawn to. It is not about precision, but about feeling—your moodboard helps us understand the world your table will live in, allowing us to compose a piece that resonates with you.



3/4 weeks

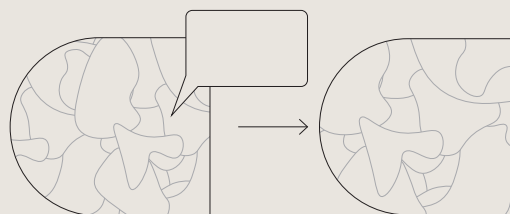
## WE MAKE THE FIRST SHEET

Our colourist carefully gathers materials from the discarded pieces of our chair collection, synthesizing them into the first sheet. This initial sheet will serve as your sample for review. At this stage, subtle adjustments are possible; however, a complete redirection cannot be accommodated. Please note that no rights can be derived from this preliminary composition.



## YOU SUPPLY US WITH YOUR FEEDBACK

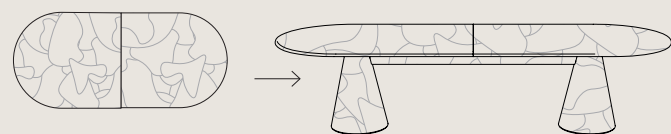
One round of refinement is possible for small adjustments—for example, introducing more white, working with larger pieces of material, or creating a quieter, more subdued composition. If necessary, we will prepare one additional sample sheet for your approval. Once approved we move to the next step.



2/3 weeks

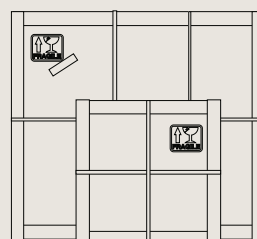
## WE FINISH THE TABLE

The lead time for the table is approximately three months. During this period, our team makes the second sheet and finishes the process with care. Please note that no interim updates are provided; once your table is finished, you will receive a photograph of the final result. From there, we proceed to the last step: payment and shipping.



## READY FOR SHIPMENT

Now that your table is complete, it will be carefully packed on a pallet for secure transport. You will receive the invoice for the remaining balance, and once this has been transferred, our logistics partner will be in touch to guide your piece smoothly through customs.



3 months